



it sa



Ad
Extreme
Antifense



Ca
ExtremeCloud
appliance



As
Automated
Sites



Fc
Flex
Connect



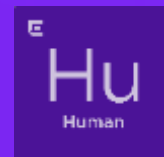
De
Defender
for IoT



Df
Data Center
Forti c

Extreme Security

Secure networks through AI / ML, proper access protection,
micro segmentation and anomaly detection



Hu
Human



Af
ExtremeAI
AF



An
Extreme
Analytics



Ap
Application
Partners



Ai
ExtremeAI
Security



Vs
VSP
Series



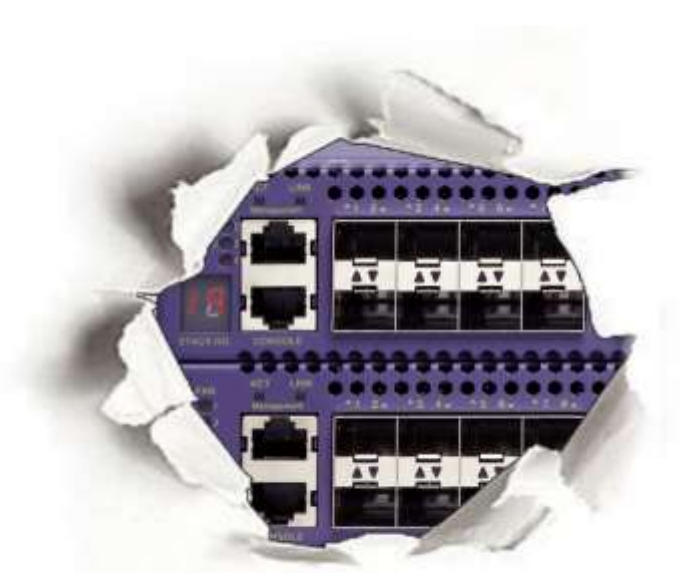
Co
Extreme
Control



Extreme™
Customer-Driven Networking

Security from our point of view

- Productivity
- Access control from all sides
- The complexity of end devices
- Understanding the network behavior
- Recognition of threats against the infrastructure
- Shadow IT
- And more...too much for 20 minutes



Challenges in the networking segment

- Digital transformation
- High Expectations
- Increasing complexity
- Service Provisioning on the fly
- Downtime? Whats that?
- Security Budget
- The human factor





Access Control


Co
Extreme
Control

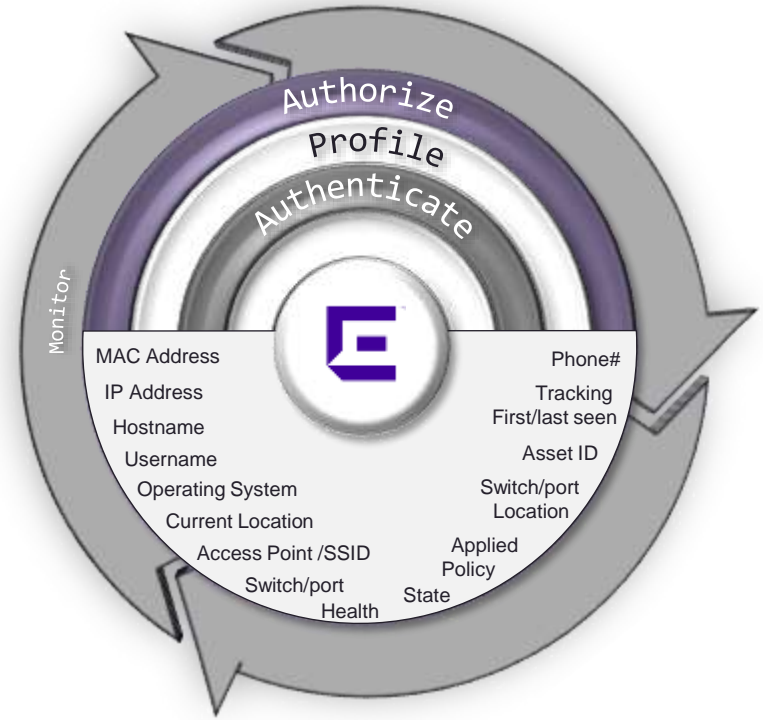

Ma
Extreme
Management


Cm
Extreme
Compliance


An
Extreme
Analytics

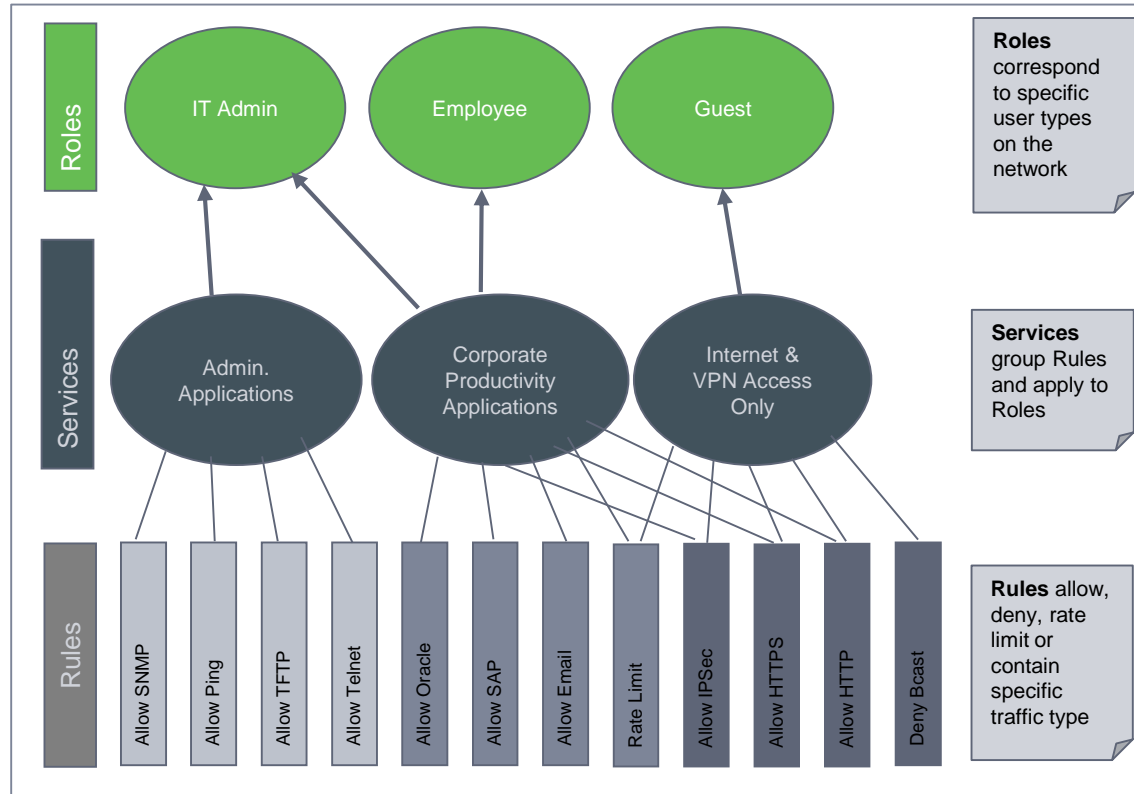
Access Control – key function for agile networking

- Covering the risk of end systems
- Users are role players
- Authentication methods define security levels
- Understanding end system characteristics
- Integrity check with assessment and MDM Systems
- Time and location oriented
- Guest and Registration portals for every purpose



Rules in the access – Protection from the start

- Roles / Rules assignment
- Access/Deny Rules (L2-4)
- VLAN-per-Service
- Application control on wireless LAN
- Topology steering in wireless LAN
- Quality of Service
- Full SPBM Fabric integration





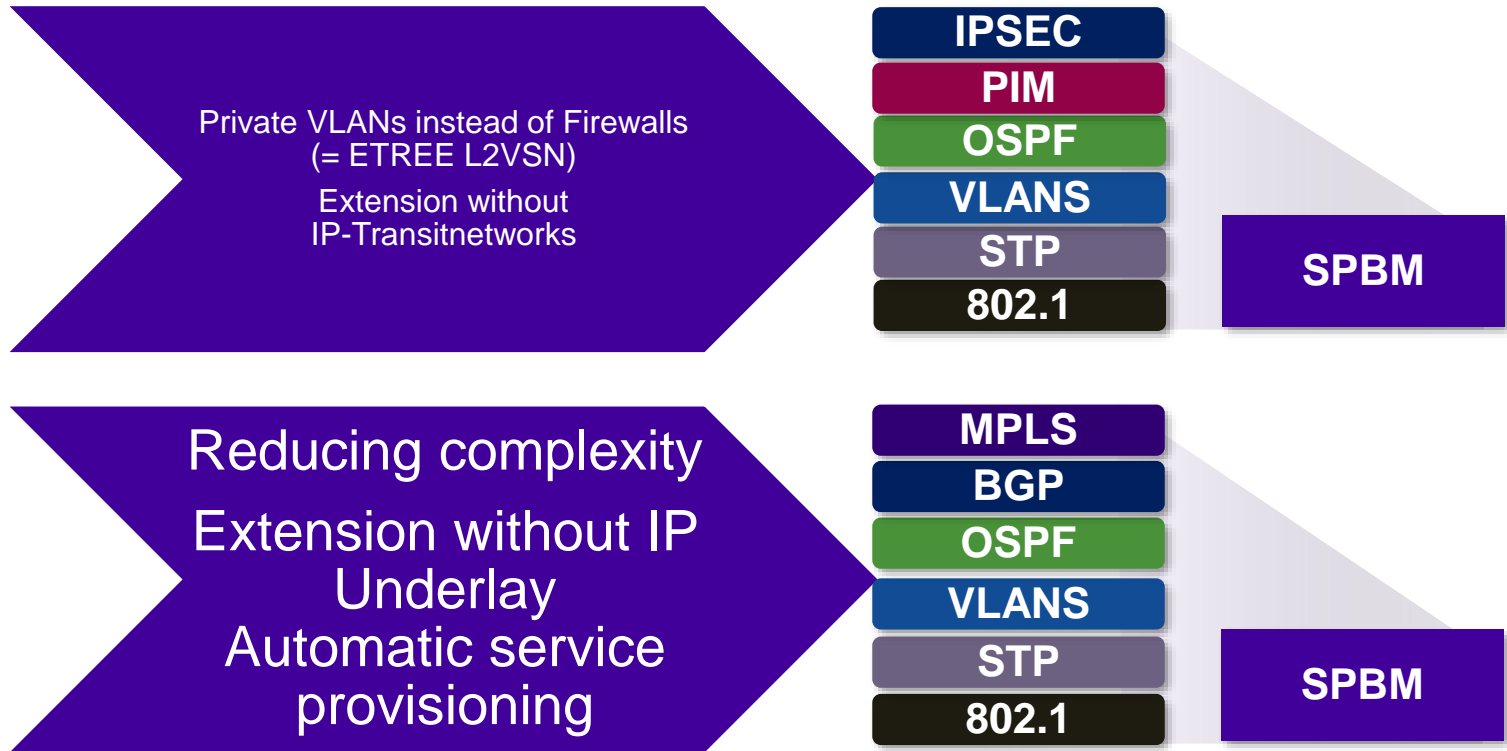
Automated Campus

Micro Segmentation

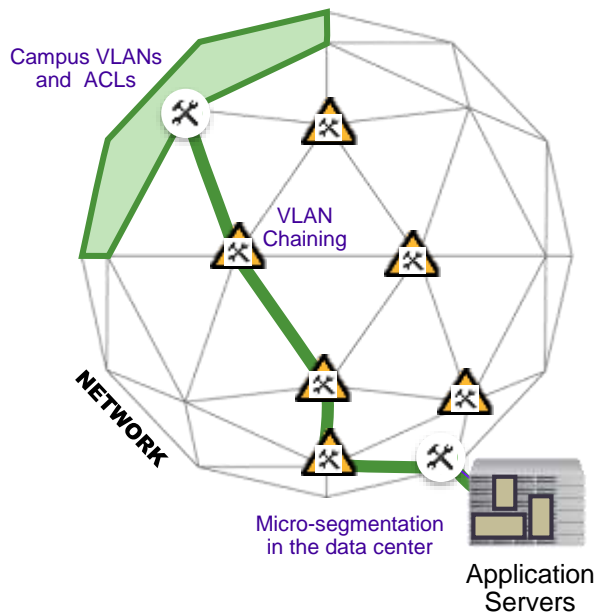


Security through simplicity

SPBM based Fabric instead of OSPF- oder MPLS-based WAN

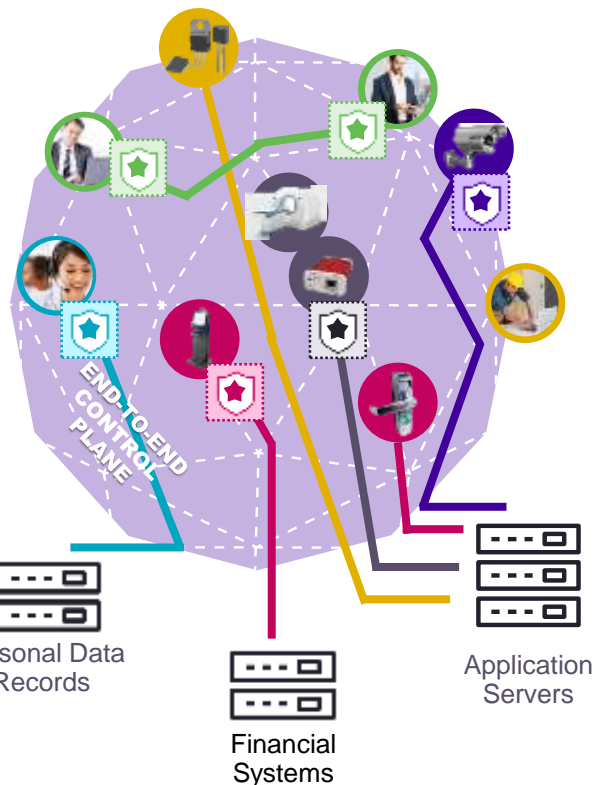


Enhanced Security with Hyper-Segmentation



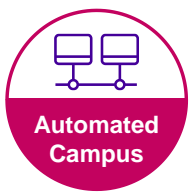
Without Hyper-Segmentation
Isolation is fragmented and
limited in scale

With Hyper-Segmentation
Zones effortlessly reach
across entire network

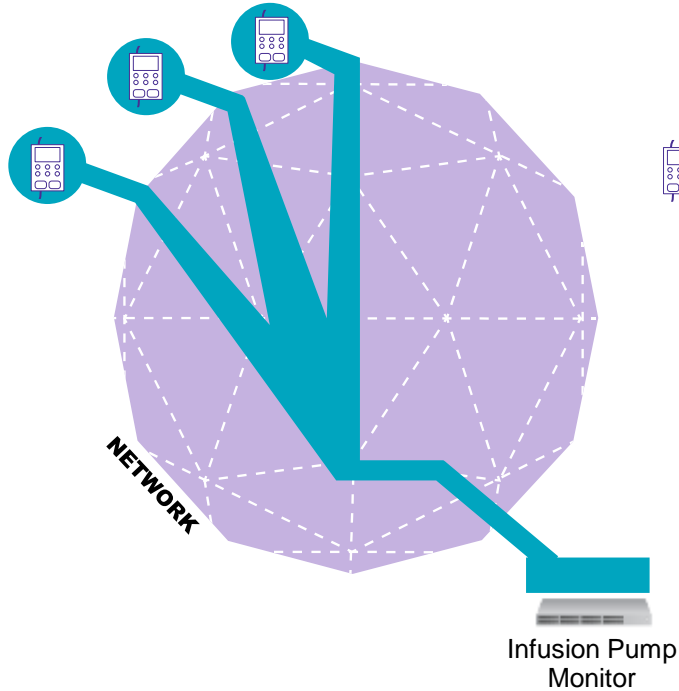


Resilience enhances Security

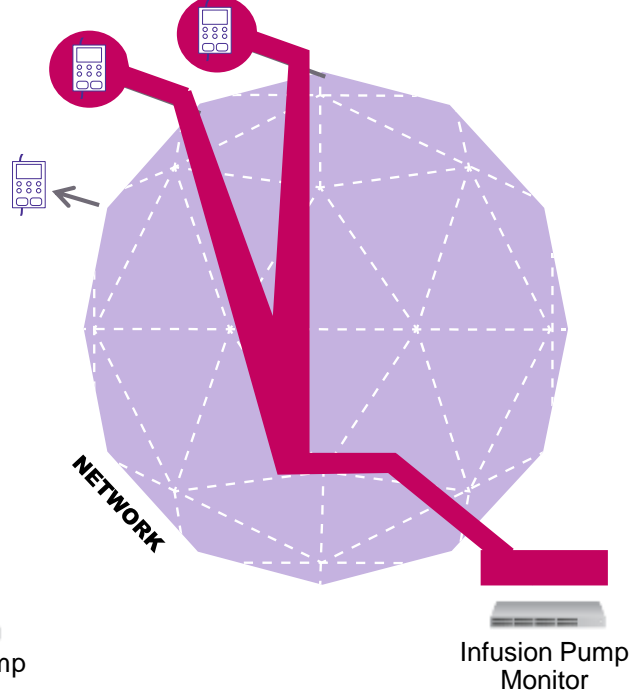
Automatic clean up reduces points of attack



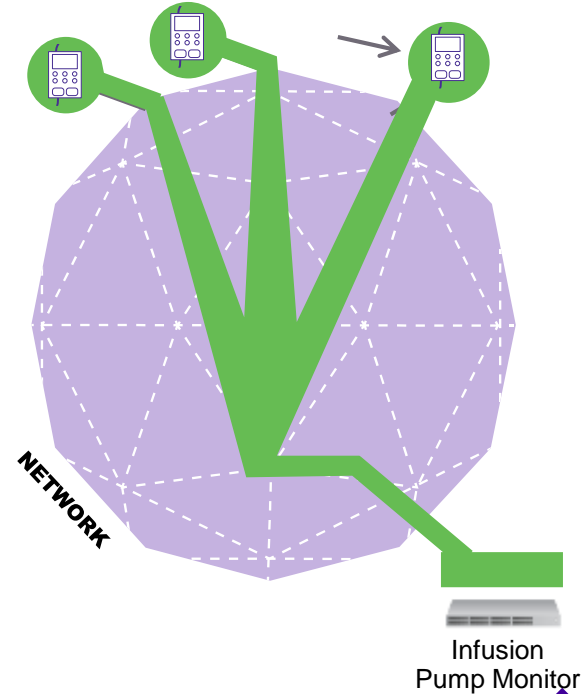
IoT: Infusion Pumps



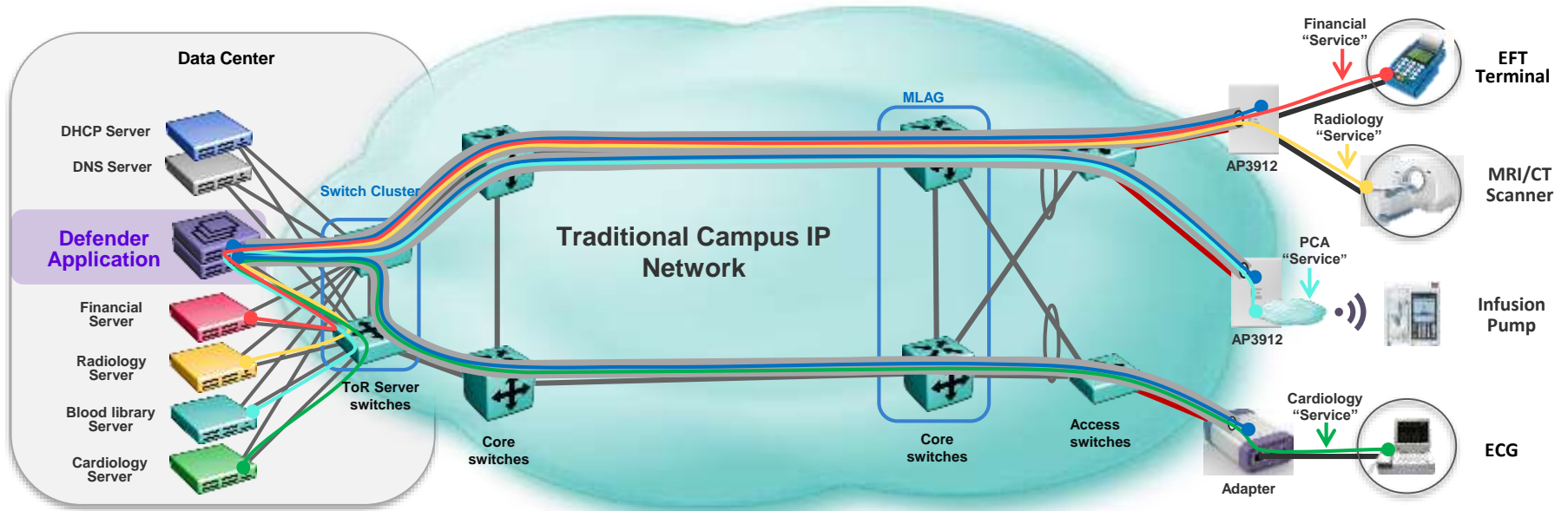
Device disconnected
Service path is erased



Device moves, Service networks
extends to the new location



Plug and Play Security for the daily IoT Business



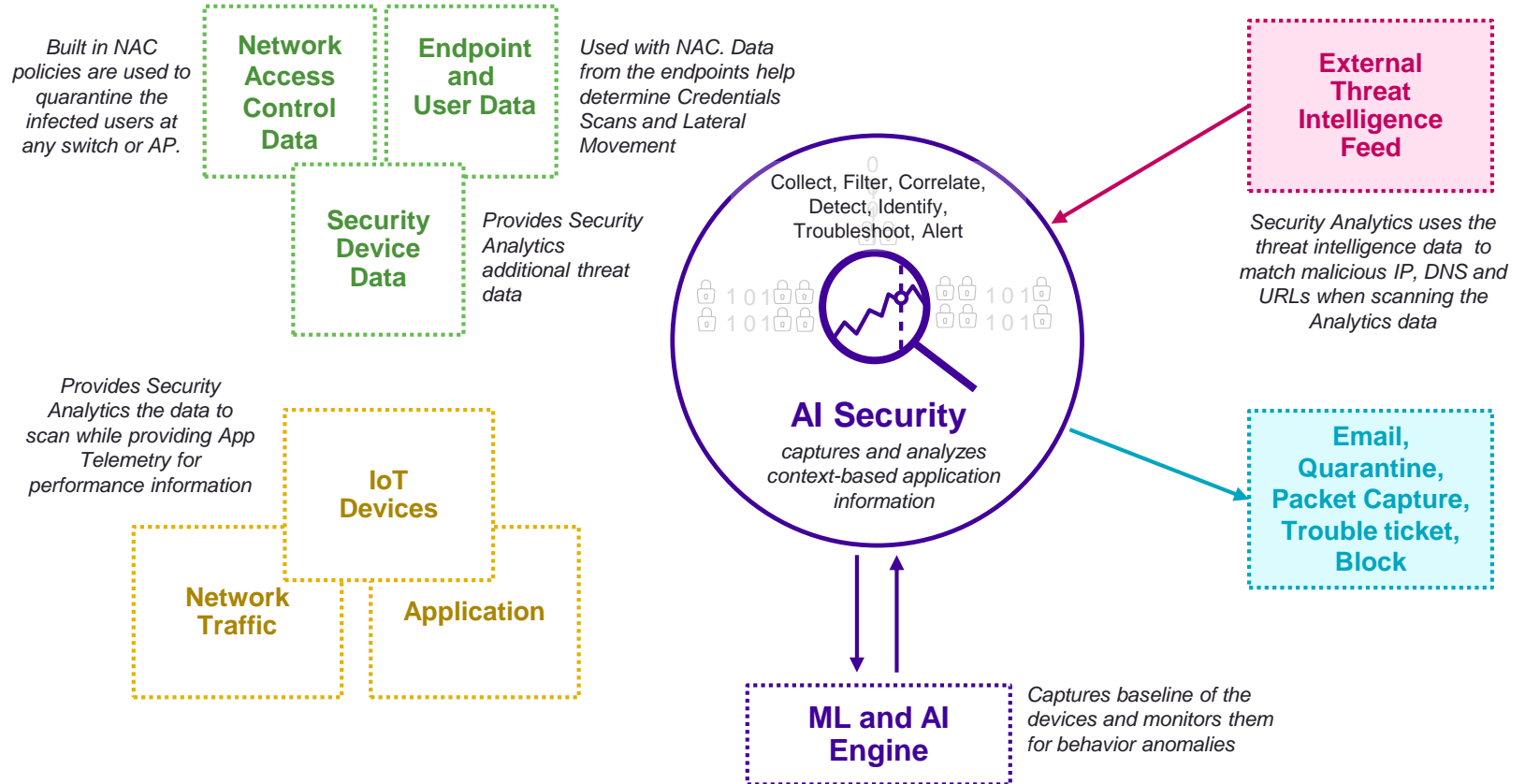
Quick implementation without massive forklift activities.



Extreme AI Security



A Deeper Look into ExtremeAI Security

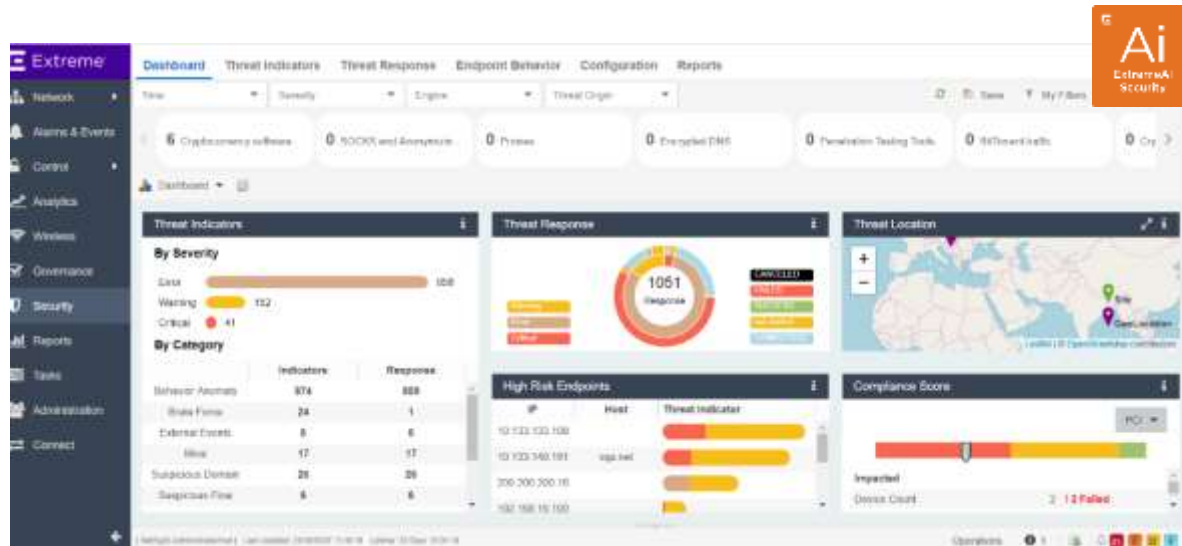


Threat Intelligence

- Automated analysis of traffic flows
 - Leverages flow data from Analytics Engine
- External Threat Intelligence Feed
 - Real-time updates
 - Wide-variety of threat types detected

Reputation-based IP/DNS, Malwares, brute-force attacks, etc.

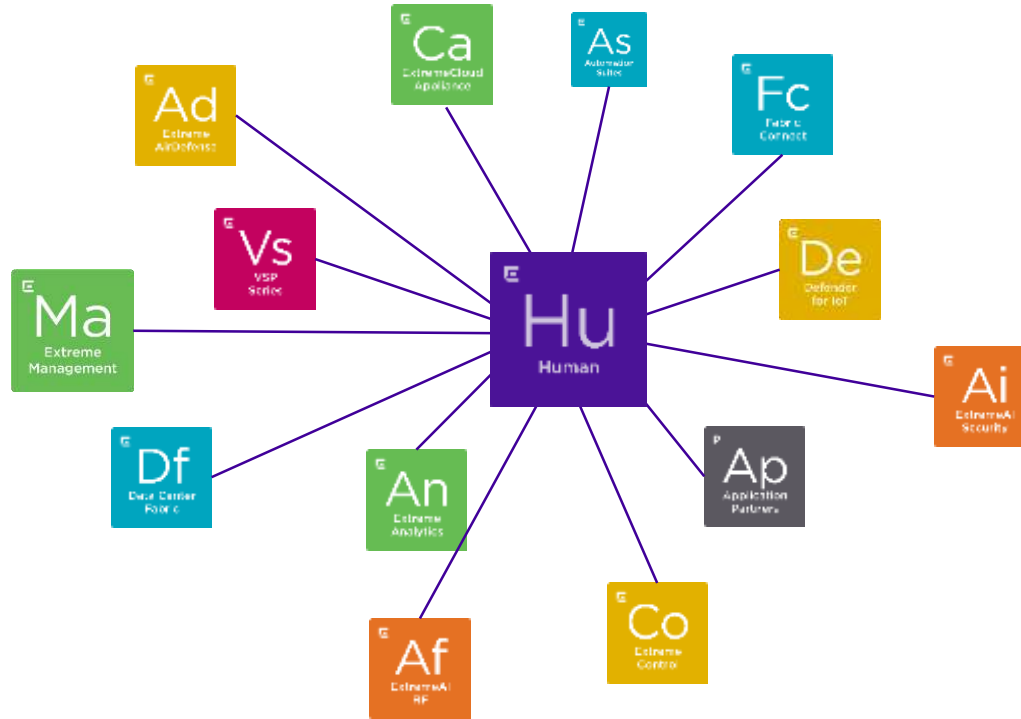
- Scale
 - Scales with multiple Analytics engines
 - No separate VM/Server needed



| ID | Severity | Threat Type | Threat Val | Engine IP | Source | Destination | Response Status | Source |
|-------|----------|--------------------|----------------|------------|----------------|----------------|-----------------|----------------|
| 10174 | Warning | Malicious Activity | 192.168.201.22 | 172.17.0.3 | 192.168.201.22 | 192.168.201.22 | Success | 192.168.201.22 |
| 10175 | Warning | Malicious Activity | 192.168.201.22 | 172.17.0.3 | 192.168.201.22 | 192.168.201.22 | Success | 192.168.201.22 |
| 10176 | Warning | Malicious Activity | 192.168.201.22 | 172.17.0.3 | 192.168.201.22 | 192.168.201.22 | Success | 192.168.201.22 |
| 10177 | Warning | Malicious Activity | 192.168.201.22 | 172.17.0.3 | 192.168.201.22 | 192.168.201.22 | Success | 192.168.201.22 |
| 10178 | Warning | Malicious Activity | 192.168.201.22 | 172.17.0.3 | 192.168.201.22 | 192.168.201.22 | Success | 192.168.201.22 |
| 10179 | Warning | Malicious Activity | 192.168.201.22 | 172.17.0.3 | 192.168.201.22 | 192.168.201.22 | Success | 192.168.201.22 |
| 10180 | Warning | Malicious Activity | 192.168.201.22 | 172.17.0.3 | 192.168.201.22 | 192.168.201.22 | Success | 192.168.201.22 |
| 10181 | Warning | Malicious Activity | 192.168.201.22 | 172.17.0.3 | 192.168.201.22 | 192.168.201.22 | Success | 192.168.201.22 |
| 10182 | Warning | Malicious Activity | 192.168.201.22 | 172.17.0.3 | 192.168.201.22 | 192.168.201.22 | Success | 192.168.201.22 |
| 10183 | Warning | Malicious Activity | 192.168.201.22 | 172.17.0.3 | 192.168.201.22 | 192.168.201.22 | Success | 192.168.201.22 |
| 10184 | Warning | Malicious Activity | 192.168.201.22 | 172.17.0.3 | 192.168.201.22 | 192.168.201.22 | Success | 192.168.201.22 |
| 10185 | Warning | Malicious Activity | 192.168.201.22 | 172.17.0.3 | 192.168.201.22 | 192.168.201.22 | Success | 192.168.201.22 |

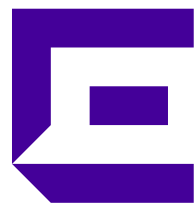


The human factor – supported by technology





**Learn more about us
and our solutions
Visit us in Hall 10.0 Booth 324**



Extreme™

Customer-Driven Networking

WWW.EXTREMENETWORKS.COM

