

WE CAN
DO SO
MUCH
TOGETHER



tecnalia  Inspiring
Business

Building Trust in the Machine Economy

Ana Ayerbe

Ana.ayerbe@tecnalia.com

@AnaAyerbe

Hacking

DDoS attack that disrupted internet was largest of its kind in history, experts say

Dyn, the victim of last week's denial of service attack, said it was orchestrated using a weapon called the Mirai botnet as the 'primary source of malicious attack'

Major cyber attack disrupts internet service across Europe and US

Nicky Woolf in San Francisco

@nickywoolf Wed 26 Oct 2016 21:42 BST

769 423

This article is over 1 year old



Advertisement

Florenca - Hotel Esperanza	Bien 7.7	Reserva
Pisa - Hotel La Pace	Bien 7.5	Reserva
Florenca - Hotel Caravaggio	Muy bien 8.4	

People:

Cybersecurity Awareness



Cybersecurity by Design:

Cybersecurity in the whole Software
Development Process

Cybersecurity along the Supply Chain.

Try not to use B2C devices in B2B applications

Architecture and scalability for IoT

Before 2005



Today

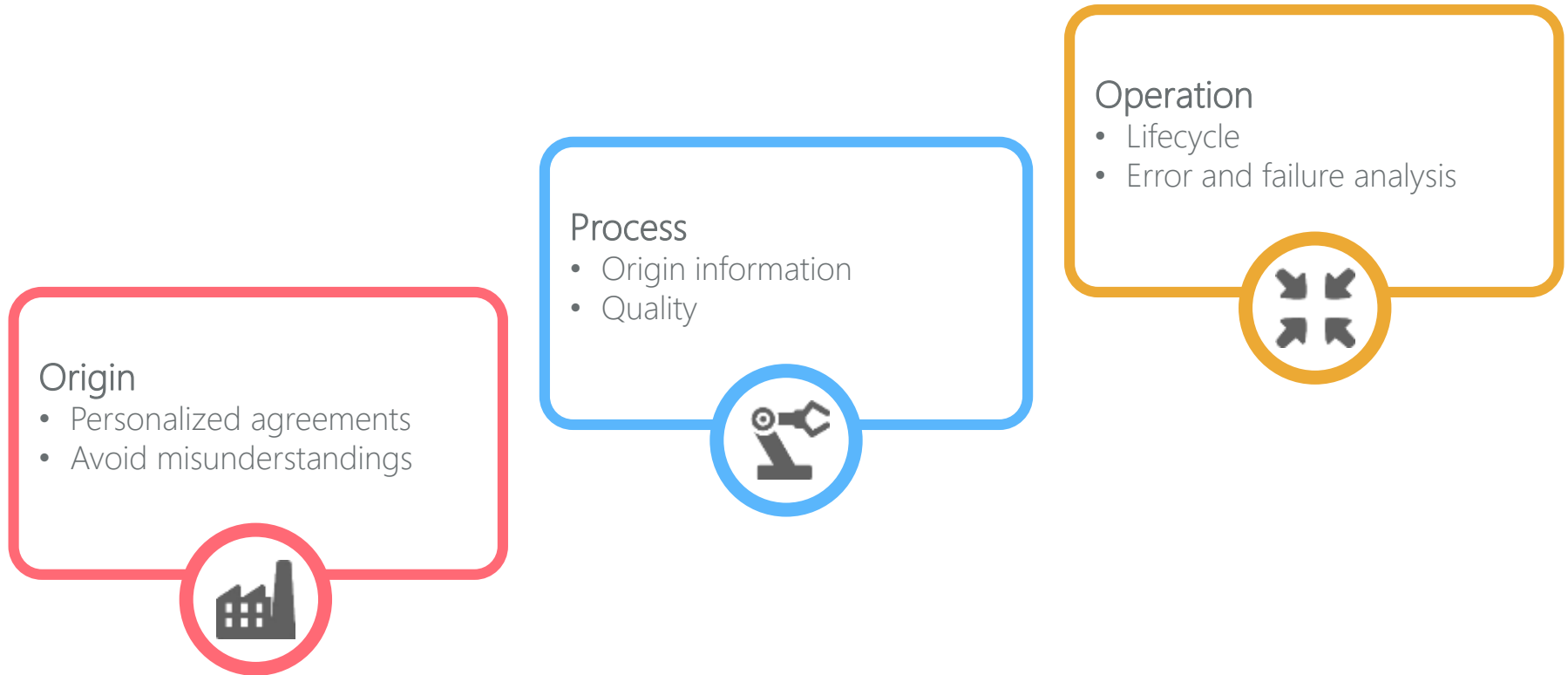


2025 and beyond



Blockchain
will change
procedures and
business models

What will be different?



Rethink

how

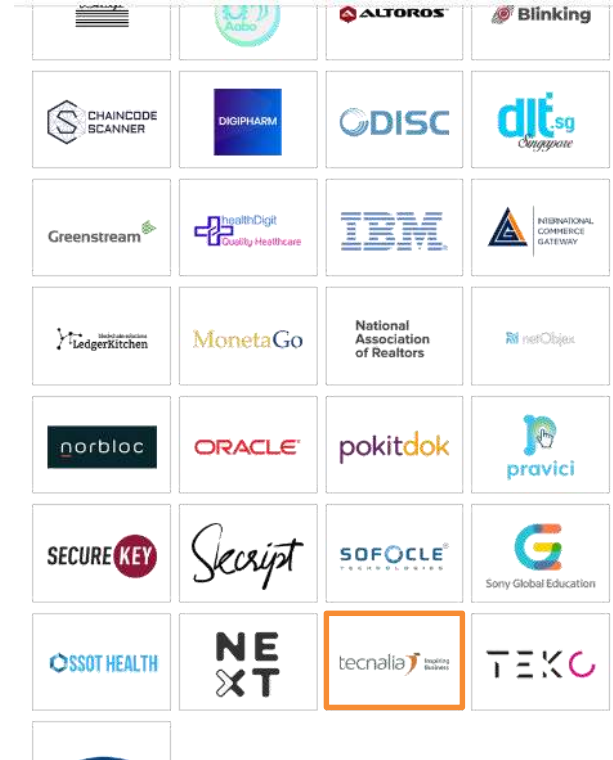
companies, ecosystems &
economies

can work with Blockchain

Blockchain Showcase

Promote your projects built with Hyperledger technologies in the Blockchain Showcase. This is open to members and non-members alike working with Hyperledger at any phase from initial development through to late stage production deployments.

ACTION: [List your project!](#)



Share this:

<https://www.hyperledger.org/resources/blockchain-showcase?profile=tecnalia-research-innovation>

Cattle supply chain

Blockchain in Food Traceability

Digital goods traceability
Data immutability
Information privacy

Basque Quality Product control and certification
Agrifood supply chain guarantee



Salmenta zuzenerako baimendua
Euskal Okela
Autorizazioa para la venta directa

Approved butcher shop
Special permission to distribute certified food.



Producer
Raise cattle in quality conditions with a special identity.



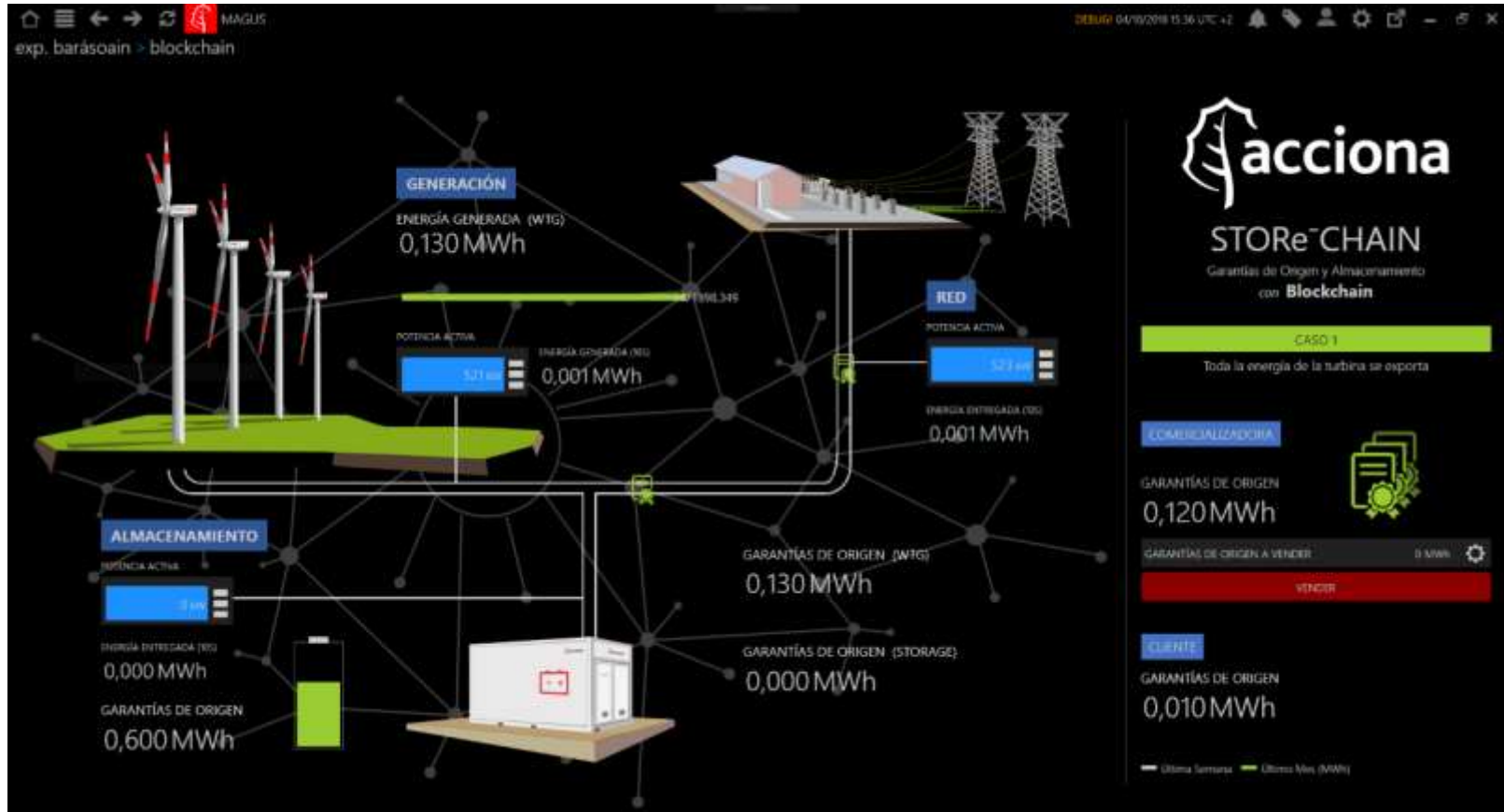
Inspector
Ensures the compliance with health regulations.



Slaughterhouse
Confirms the origin of the animal.



Energy: Guarantee of origin



Transport: Monitor and audit connected transport systems like drones and vehicles.

Aggregates and collect data from heterogeneous sources (vehicles, traffic management systems, operators, public services, ...), registering events associated with vehicles and routes, incidents and anomalies.

Chainbus

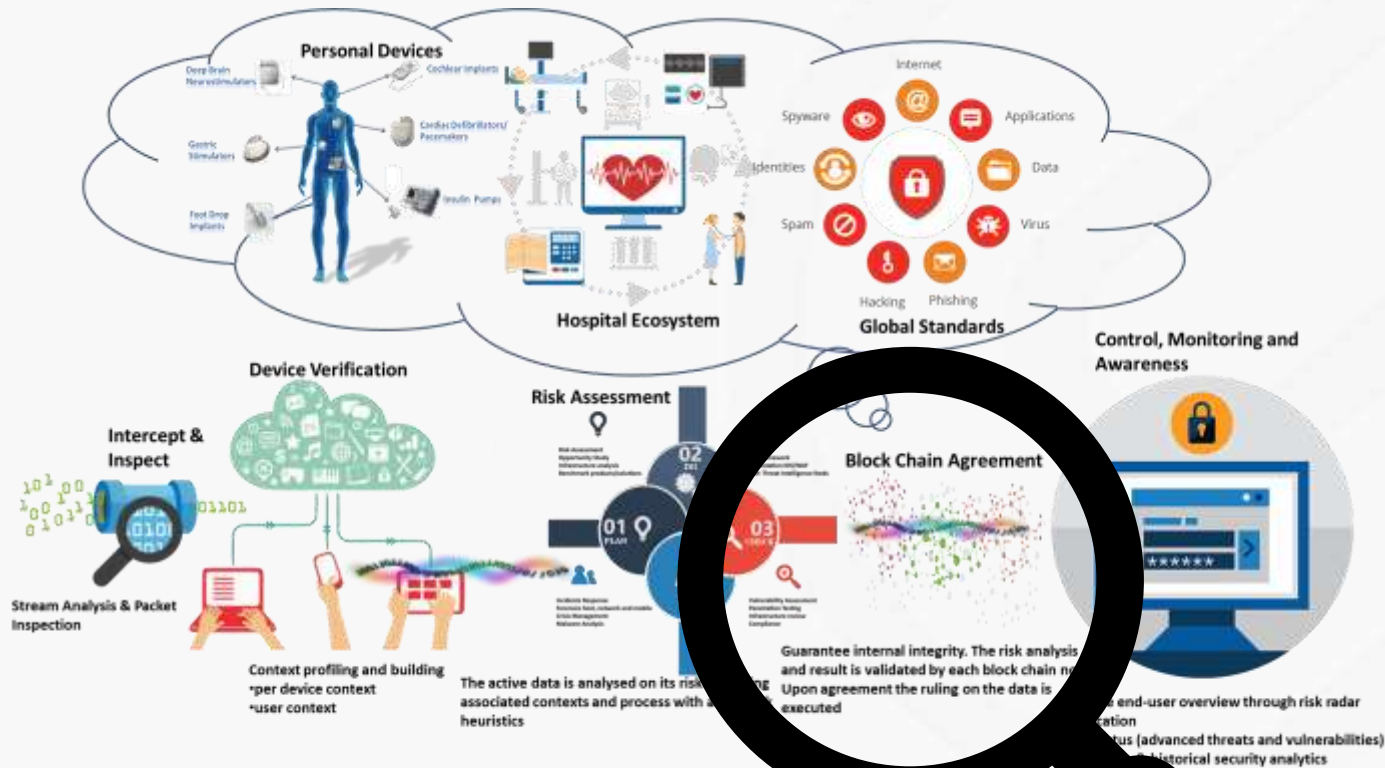
Con localización e información detallada:



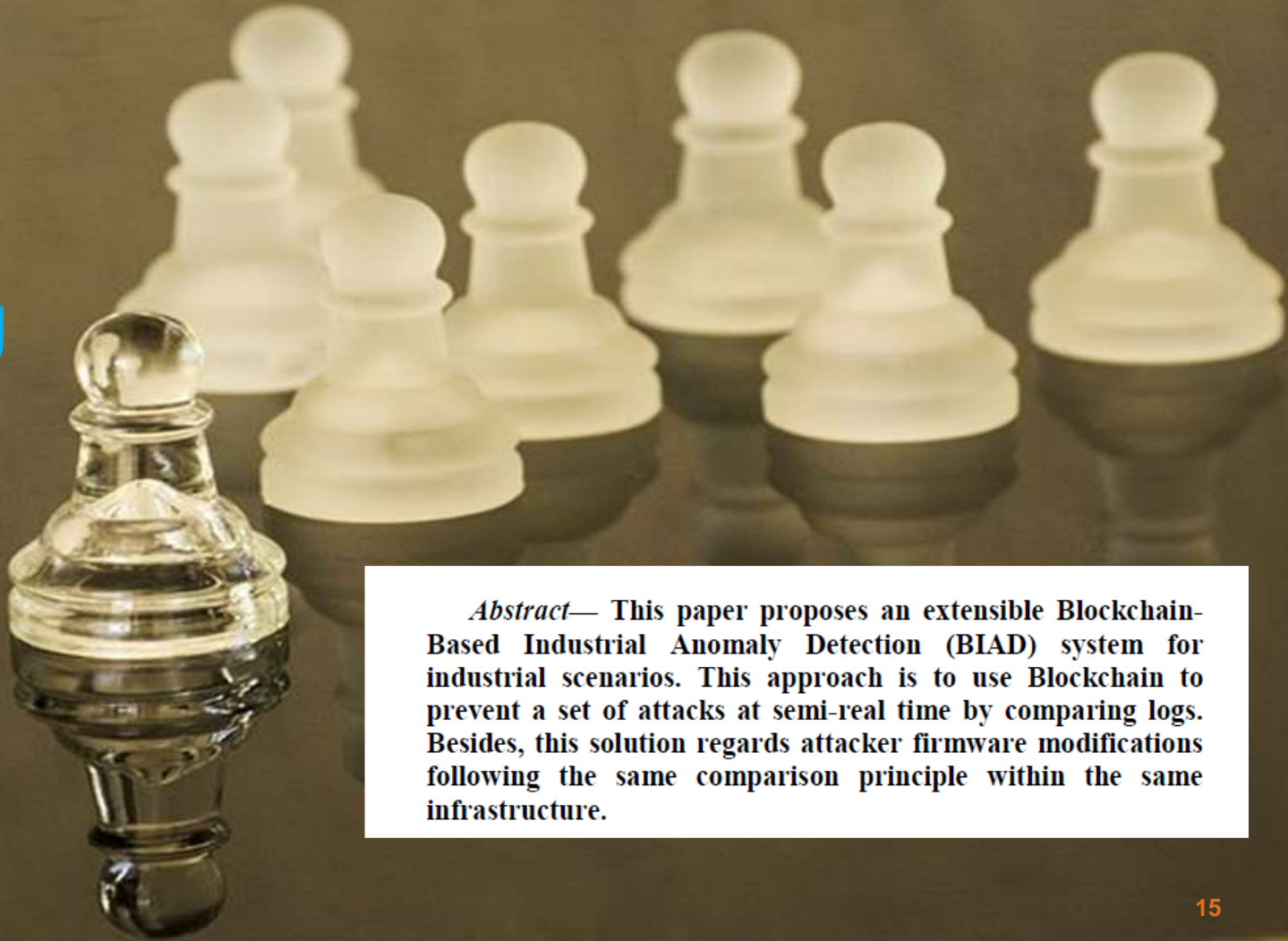
vehículo	Recepción 1	proceder	Recepción 2	Recepción 3	categoria	Recepción 4	Recepción 5	Recepción 6	Recepción 7	Recepción 8	Recepción 9	Recepción 10	Recepción 11	Recepción 12	Recepción 13	Recepción 14	Recepción 15	Recepción 16	Recepción 17	Recepción 18	Recepción 19	Recepción 20	Recepción 21	Recepción 22	Recepción 23	Recepción 24	Recepción 25	Recepción 26	Recepción 27	Recepción 28	Recepción 29	Recepción 30	Recepción 31	Recepción 32	Recepción 33	Recepción 34	Recepción 35	Recepción 36	Recepción 37	Recepción 38	Recepción 39	Recepción 40	Recepción 41	Recepción 42	Recepción 43	Recepción 44	Recepción 45	Recepción 46	Recepción 47	Recepción 48	Recepción 49	Recepción 50	Recepción 51	Recepción 52	Recepción 53	Recepción 54	Recepción 55	Recepción 56	Recepción 57	Recepción 58	Recepción 59	Recepción 60	Recepción 61	Recepción 62	Recepción 63	Recepción 64	Recepción 65	Recepción 66	Recepción 67	Recepción 68	Recepción 69	Recepción 70	Recepción 71	Recepción 72	Recepción 73	Recepción 74	Recepción 75	Recepción 76	Recepción 77	Recepción 78	Recepción 79	Recepción 80	Recepción 81	Recepción 82	Recepción 83	Recepción 84	Recepción 85	Recepción 86	Recepción 87	Recepción 88	Recepción 89	Recepción 90	Recepción 91	Recepción 92	Recepción 93	Recepción 94	Recepción 95	Recepción 96	Recepción 97	Recepción 98	Recepción 99	Recepción 100
vehículo	Recepción 1	proceder	Recepción 2	Recepción 3	categoria	Recepción 4	Recepción 5	Recepción 6	Recepción 7	Recepción 8	Recepción 9	Recepción 10	Recepción 11	Recepción 12	Recepción 13	Recepción 14	Recepción 15	Recepción 16	Recepción 17	Recepción 18	Recepción 19	Recepción 20	Recepción 21	Recepción 22	Recepción 23	Recepción 24	Recepción 25	Recepción 26	Recepción 27	Recepción 28	Recepción 29	Recepción 30	Recepción 31	Recepción 32	Recepción 33	Recepción 34	Recepción 35	Recepción 36	Recepción 37	Recepción 38	Recepción 39	Recepción 40	Recepción 41	Recepción 42	Recepción 43	Recepción 44	Recepción 45	Recepción 46	Recepción 47	Recepción 48	Recepción 49	Recepción 50	Recepción 51	Recepción 52	Recepción 53	Recepción 54	Recepción 55	Recepción 56	Recepción 57	Recepción 58	Recepción 59	Recepción 60	Recepción 61	Recepción 62	Recepción 63	Recepción 64	Recepción 65	Recepción 66	Recepción 67	Recepción 68	Recepción 69	Recepción 70	Recepción 71	Recepción 72	Recepción 73	Recepción 74	Recepción 75	Recepción 76	Recepción 77	Recepción 78	Recepción 79	Recepción 80	Recepción 81	Recepción 82	Recepción 83	Recepción 84	Recepción 85	Recepción 86	Recepción 87	Recepción 88	Recepción 89	Recepción 90	Recepción 91	Recepción 92	Recepción 93	Recepción 94	Recepción 95	Recepción 96	Recepción 97	Recepción 98	Recepción 99	Recepción 100

AIRBUS tecnalia Inspiring Business

SPHINX aims to introduce a health tailored Universal Cyber Security Toolkit, thus enhancing the cyber protection of the Health and care IT Ecosystem and ensuring patient data privacy and integrity



Semi-real-time hash comparison for detecting intrusions using Blockchain



Abstract— This paper proposes an extensible Blockchain-Based Industrial Anomaly Detection (BIAD) system for industrial scenarios. This approach is to use Blockchain to prevent a set of attacks at semi-real time by comparing logs. Besides, this solution regards attacker firmware modifications following the same comparison principle within the same infrastructure.

You can visit us at



“Pioneer facilities in Europe that allow companies: know success stories, experiment, perform trials of technological solutions and business models, and finally see them implemented.”

“

*Being prepared is half
of the victoria*

Miguel de Cervantes

”





Ana Ayerbe

Ana.ayerbe@tecnalia.com

@AnaAyerbe