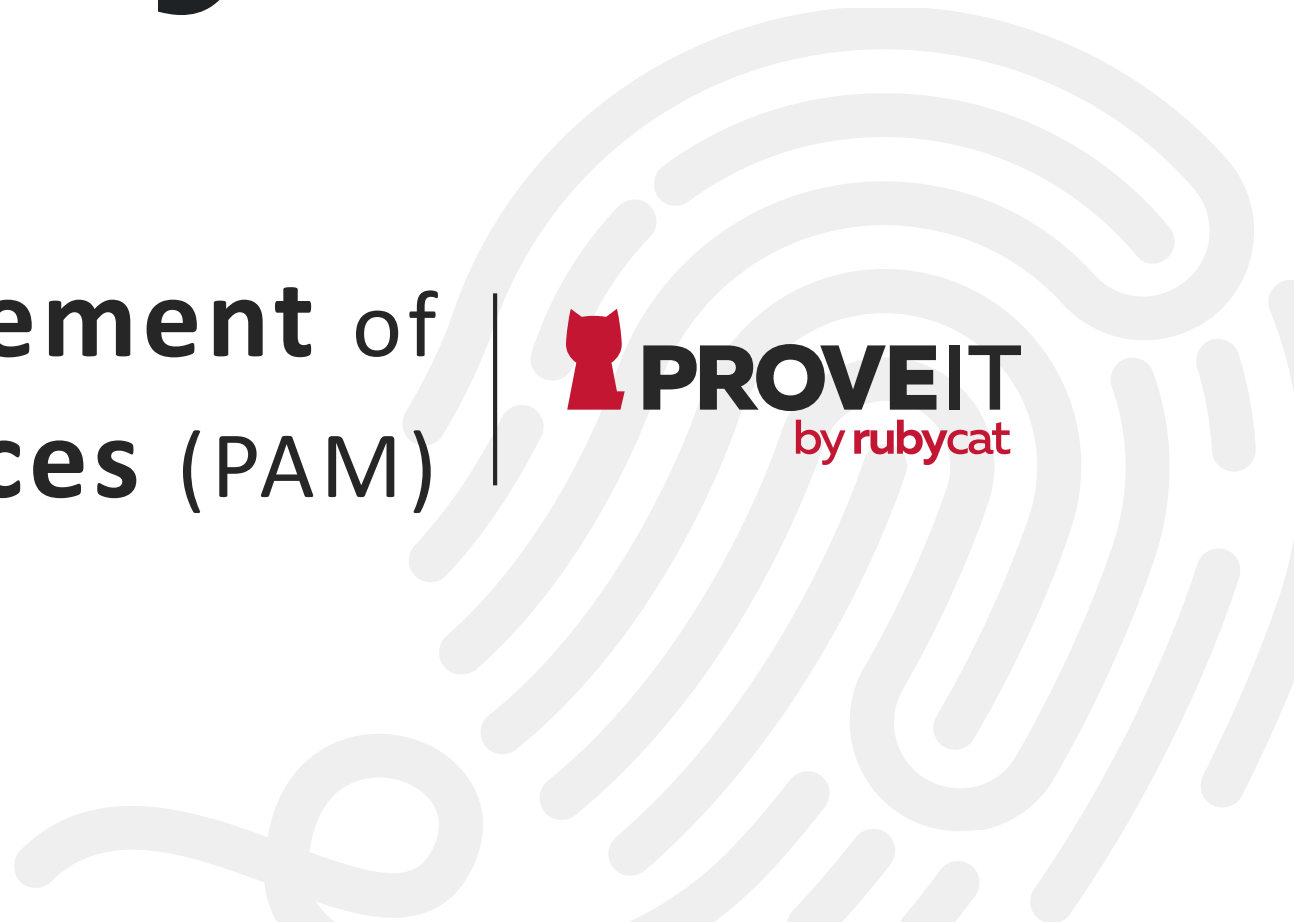


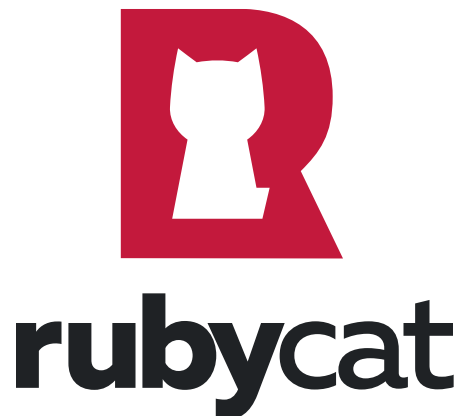


Simplify the **Management** of
Privileged Acces (PAM)



Who **we** are ?

- A french software editor (Rennes – Bretagne- FRANCE)
- Expertise in **cybersecurity** *and experience in access security*
- Rubycat offers a **Privileged Access Management (PAM) innovative solution** - *The PROVE IT administration bastion*



Solution certified by ANSSI
French Information Systems Security
Agency

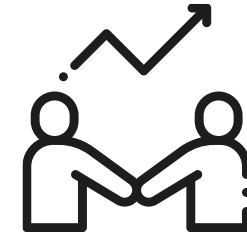


Who **we** are ?



**Gold medal at the
Safety Awards**
Paris - France

Category Cybersecurity



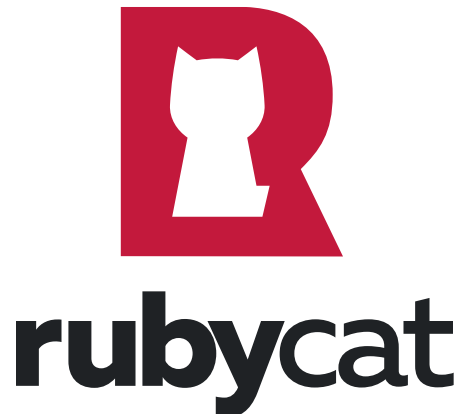
Bluecyforce partner

1st French Training Centre
and training for cyber attacks



Our clients

- Health
- Industry / Transport / Large distribution
- Community / Administration

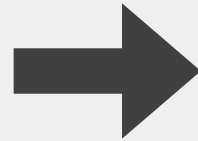


The problem of **access security**

What does



a privileged user



on your IS?

What is a... **privileged user**?



an external service provider



a telemainteneur



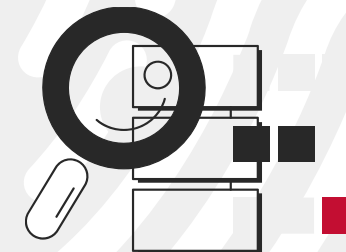
an internal administrator



with an access to



critical equipment

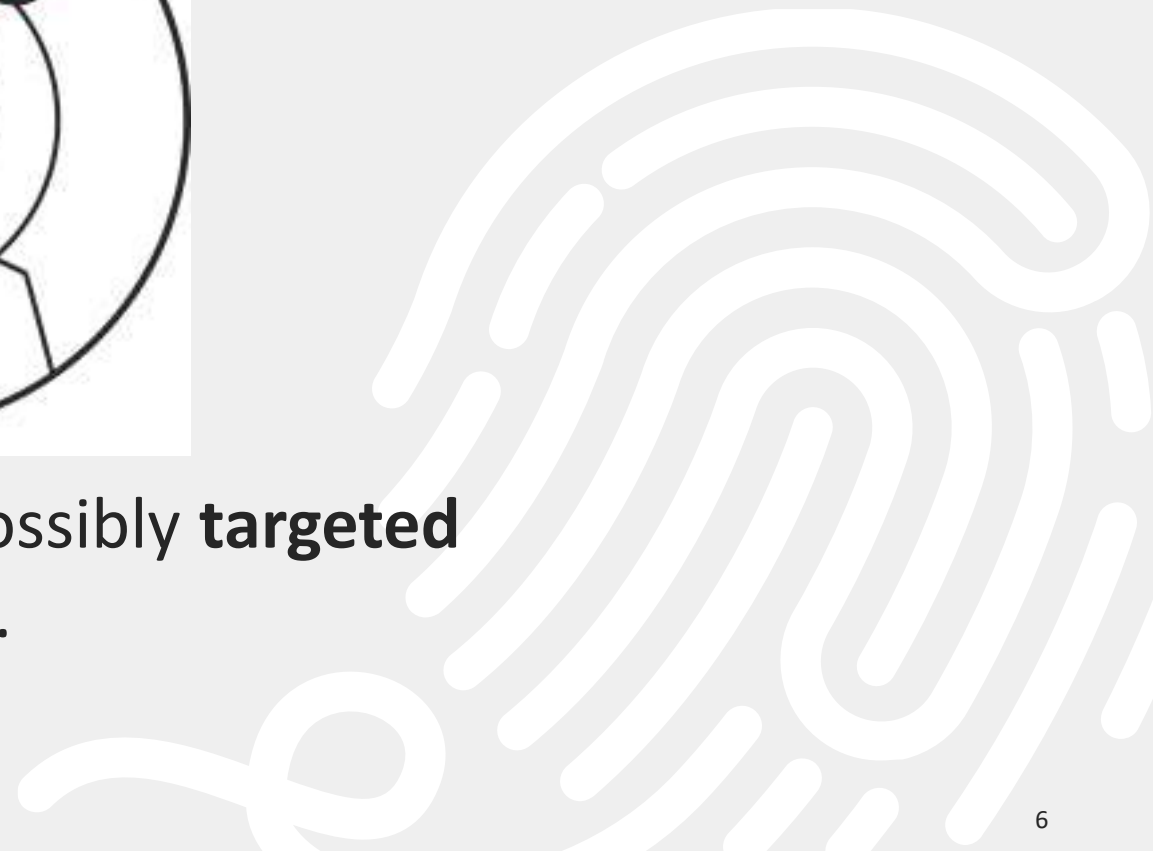


sensitive data

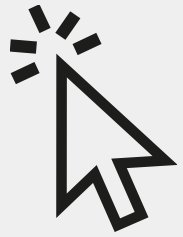
With the risks



of errors, data leaks, possibly **targeted attacks...**



Offer



a simple and
intuitive solution



for a visibility



**on the actions performed by
privilege accounts**



a **stand-alone** software
brick



which is positioned **on**
the IS

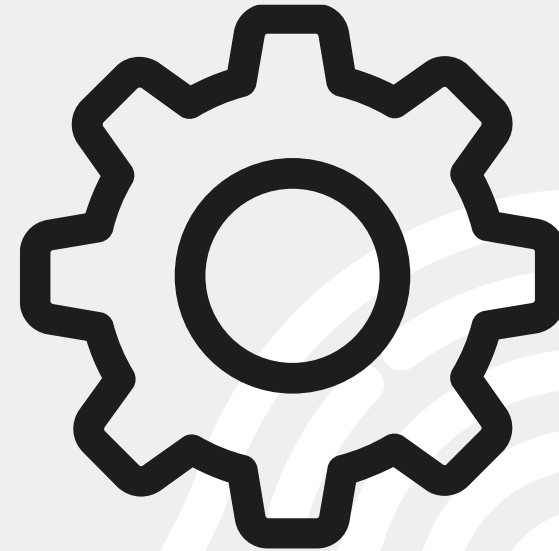


~~AGENT~~

non-invasive
solution

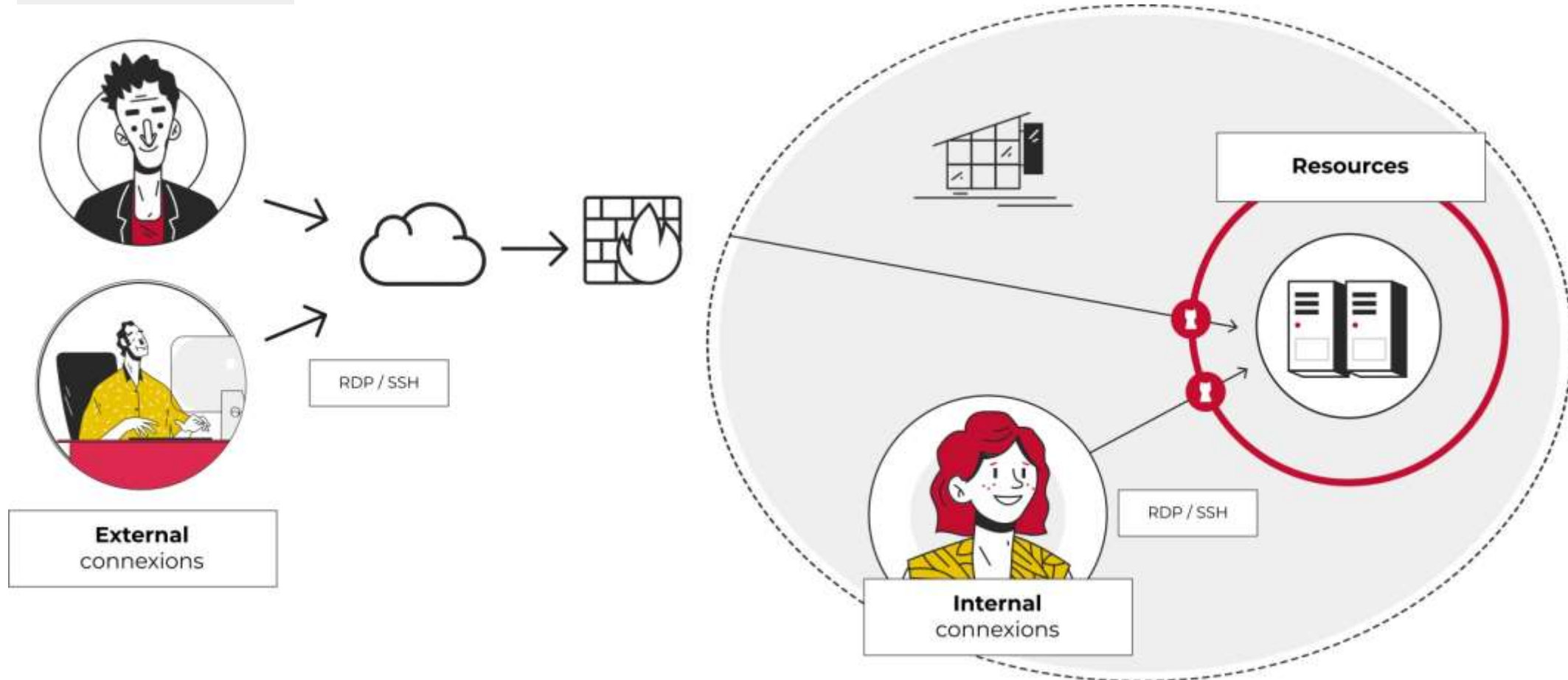


transparent for users



that adapts to
the **existing eco-system**

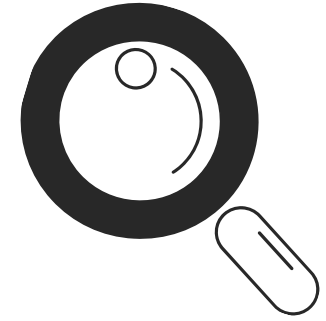
PROVE IT federates sensitive access to the IS



The functionalities

User access **management** and **control**

- User authentication – AD, LDAP,...
- Authorization policy – authorizations
- Substitution of secondary identifiers (secure safe)



Activity indicators – **Flow** management

Visualization of **real-time** events

- Possibility to disconnect a user

Subsequent viewing

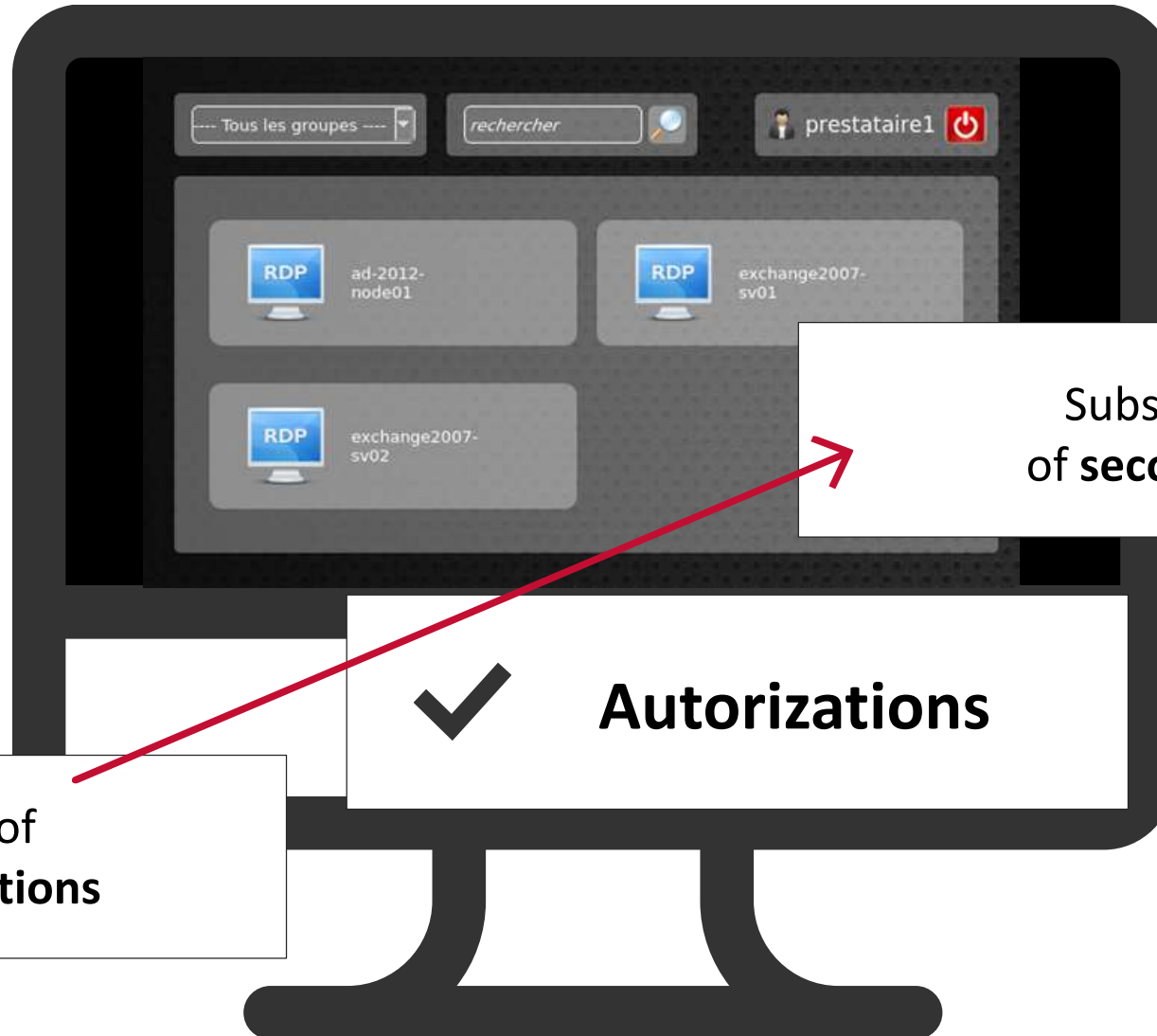
- Integrated audit trails
- Restitution with review for documentation or incident analysis



User **access management** and **control**



AUTHENTICATION of the user on LDAP



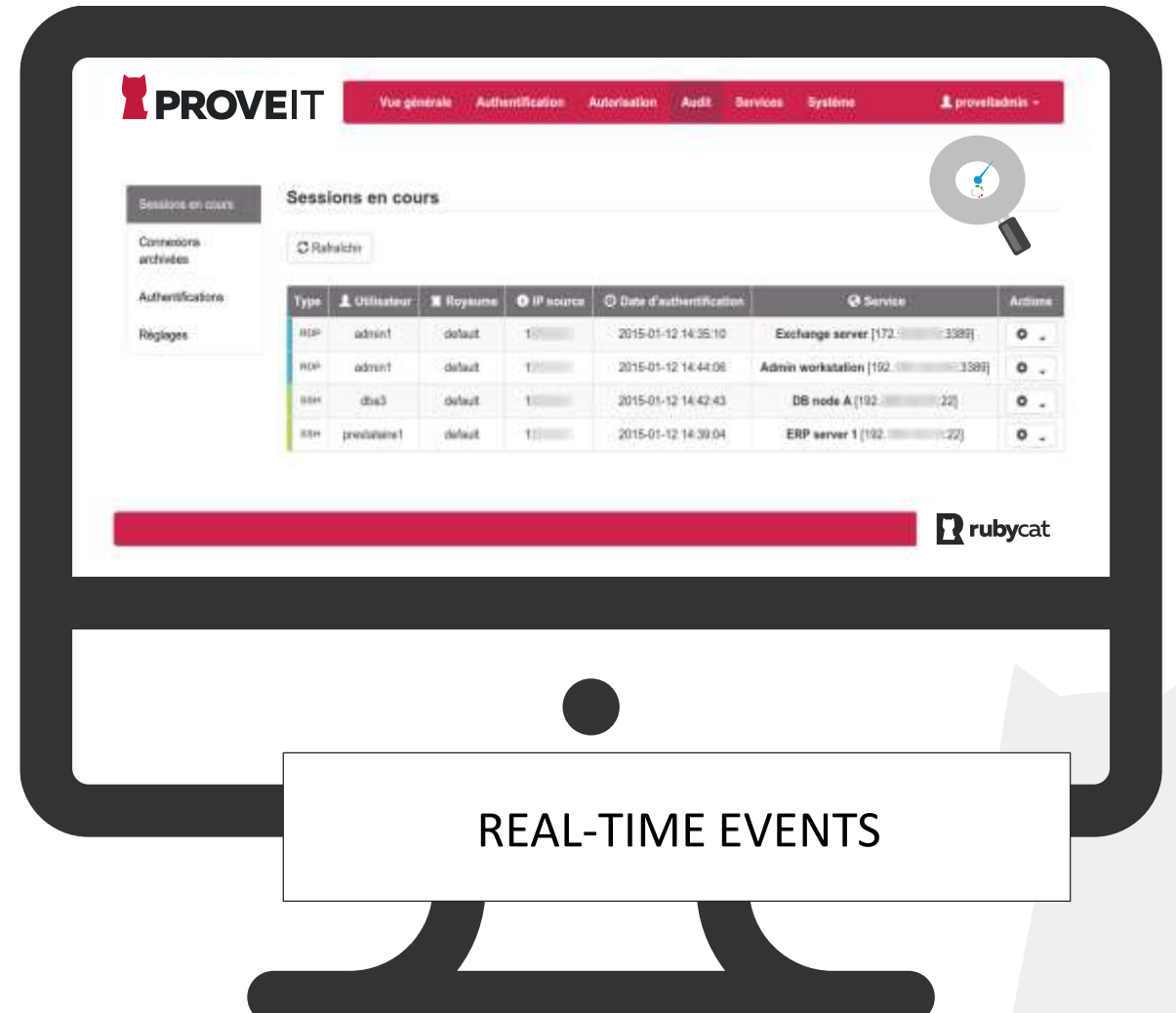
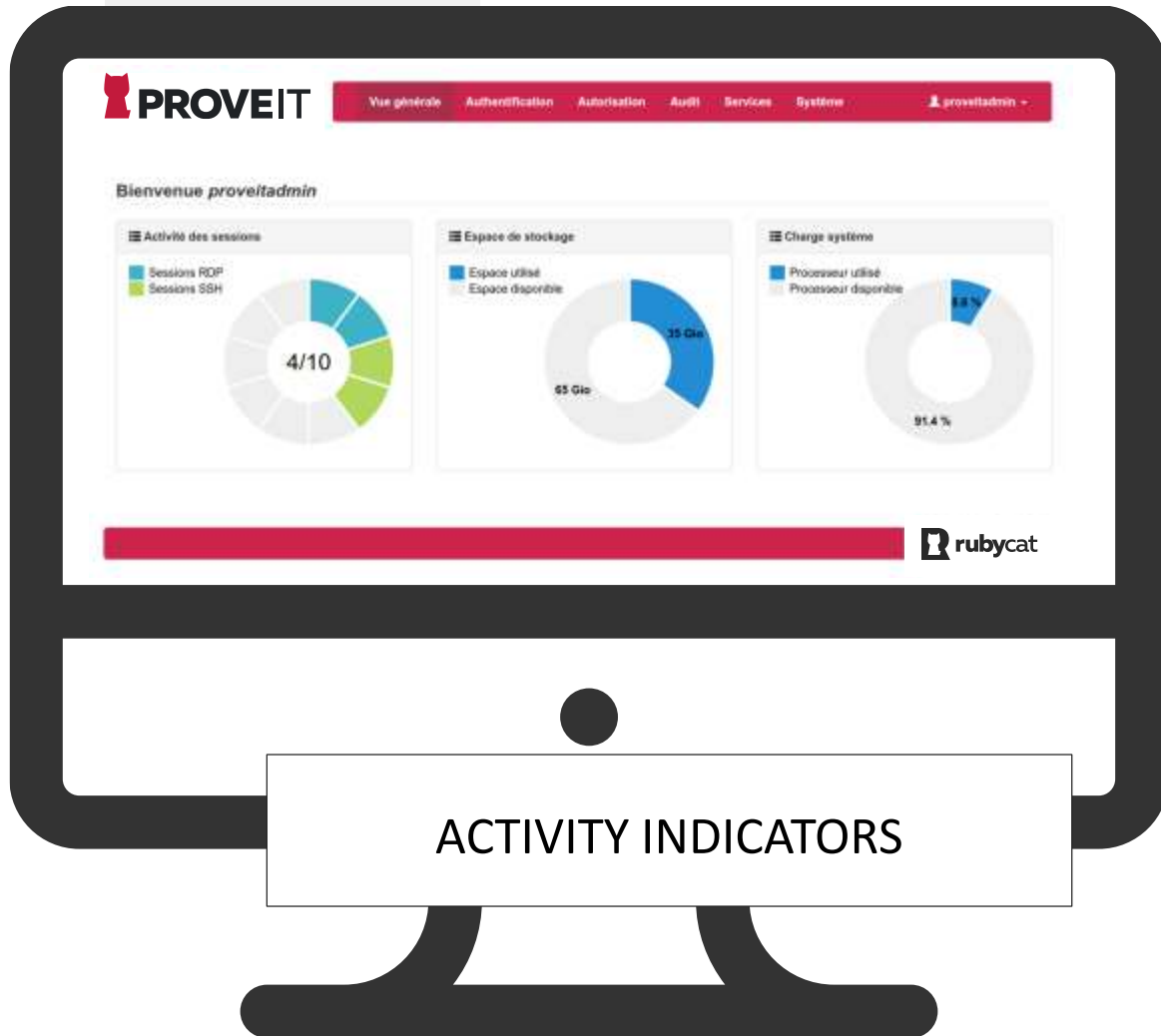
Substitution of secondary ID

Policy of **authorizations**

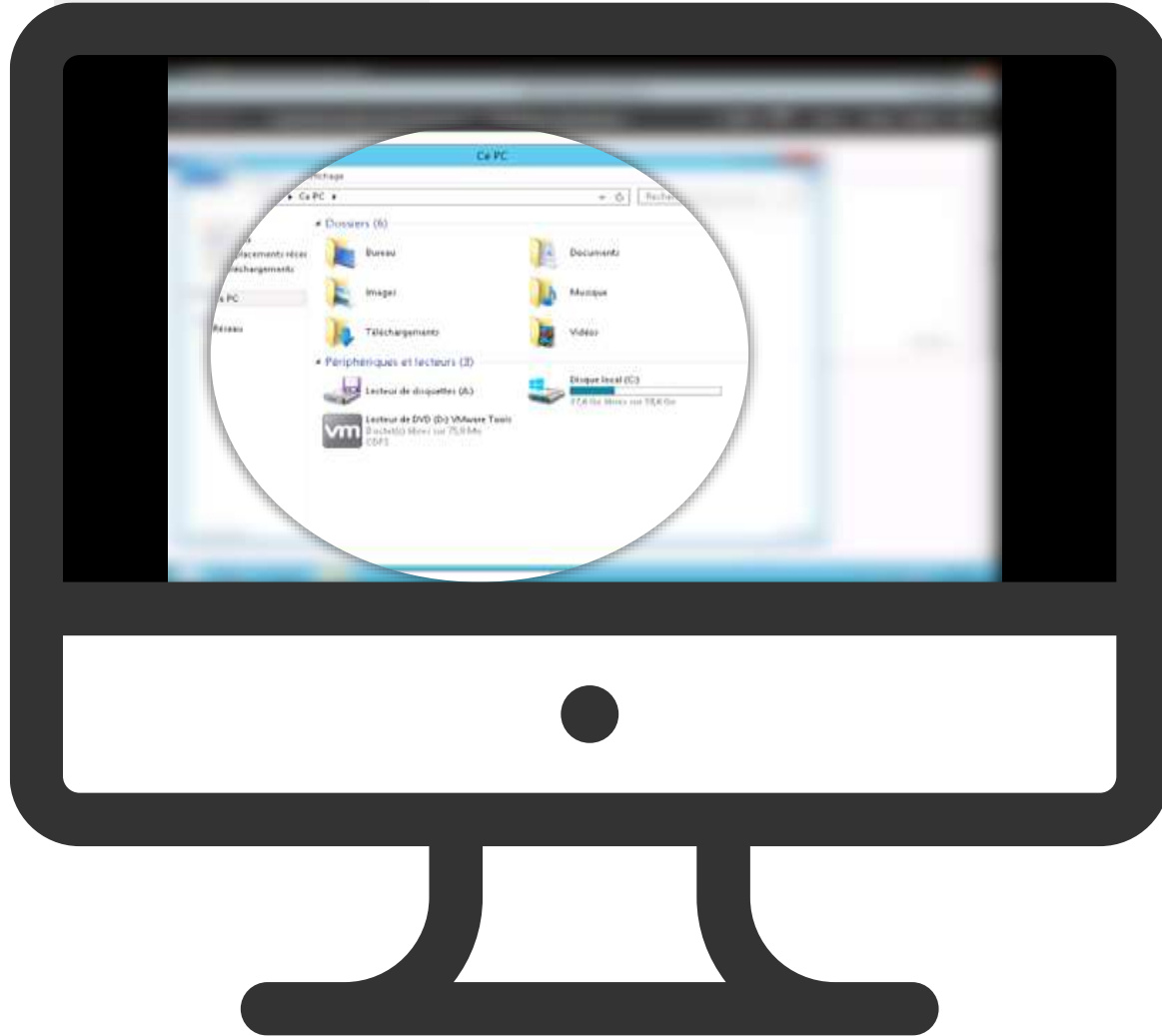
✓ **Autorizations**



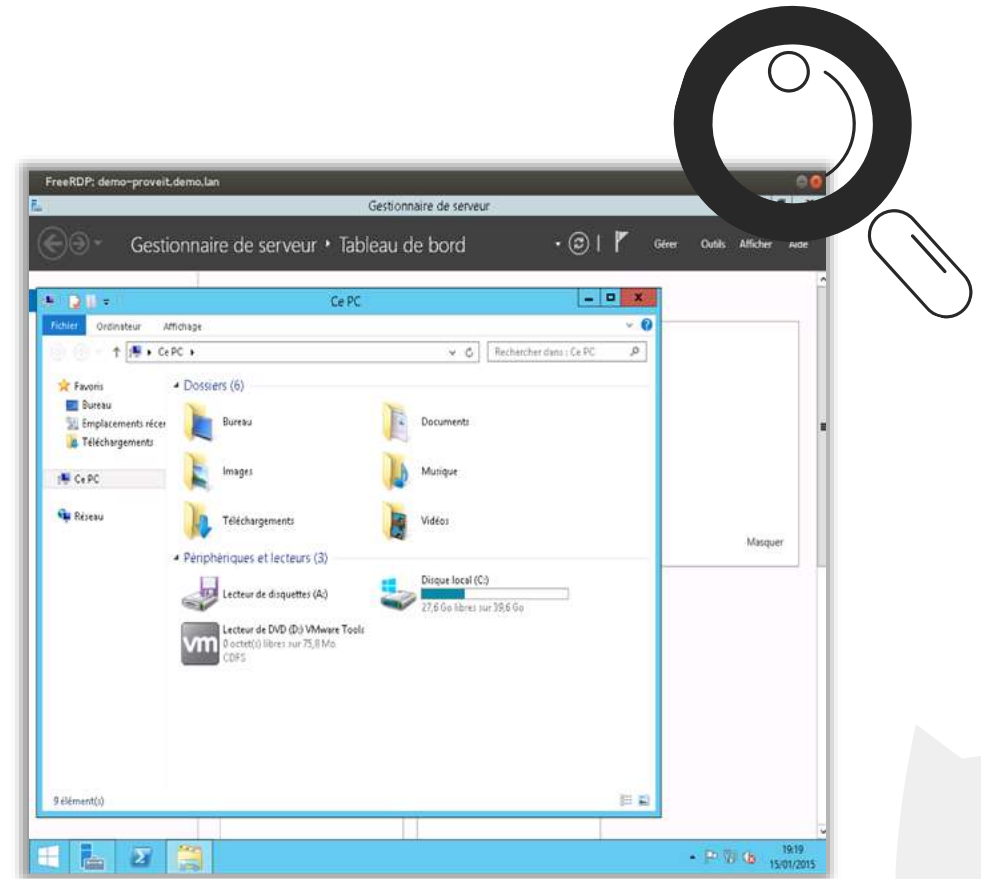
Activity indicators – Flow management



Visualization of real-time events



Possible disconnection in case of malicious intent

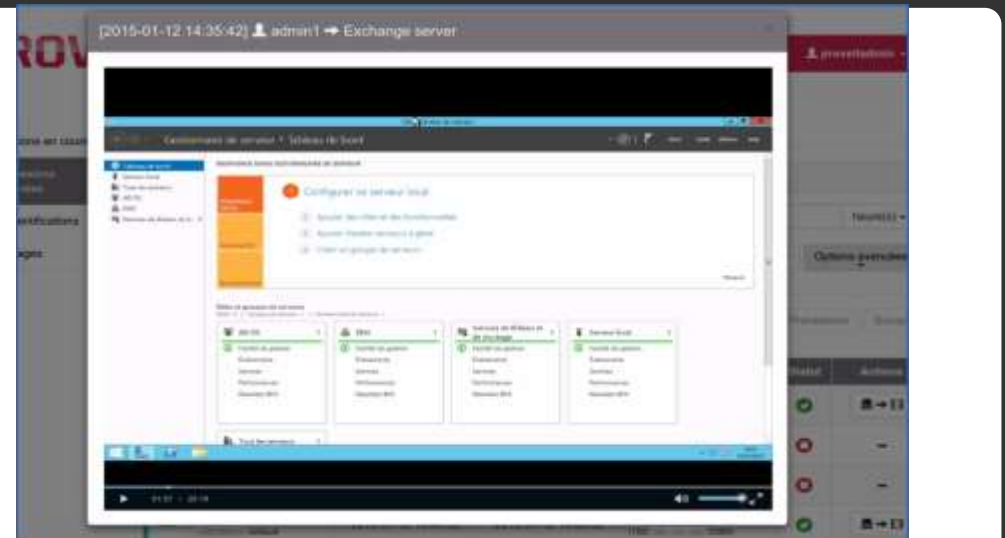


current user session

Subsequent viewing

Type	Info utilisateur	Date de début	Date de fin	Info service	Statut	Actions
RDP	admin1 default	2015-01-12 14:59:31	2015-01-12 15:00:53	Exchange server (172.16.1.100:3389)	🟢	👤📄
RDP	admin1 default	2015-01-12 14:59:07	2015-01-12 14:59:16	Admin workstation (192.168.1.100:3389)	🔴	—
SSH	admin1 default	2015-01-12 14:58:05	2015-01-12 14:58:09	DB node A (192.168.1.22)	🔴	—
RDP	admin1 default	2015-01-12 14:44:58	2015-01-12 14:45:30	Admin workstation (192.168.1.100:3389)	🟢	👤📄
RDP	admin1 default	2015-01-12 14:44:14	2015-01-12 14:44:36	Admin workstation 3 (192.168.1.100:3389)	🟢	👤📄
SSH	dba3 default	2015-01-12 14:42:49	2015-01-12 14:55:21	DB node A (192.168.1.22)	🟢	👤📄
SSH	prestataire1 default	2015-01-12 14:39:06	2015-01-12 14:56:07	ERP server 1 (192.168.1.22)	🟢	👤📄
RDP	admin1 default	2015-01-12 14:35:42	2015-01-12 14:55:58	Exchange server (172.16.1.100:3389)	🟢	👤📄

ARCHIVING
Audit trails



RESTITUTION / RE-VISUALIZATION
Visualization for documentation or incident
analysis

CUSTOMER CASE: **external case**

A **remote maintenance technician** must have **access to equipment** located on your infra



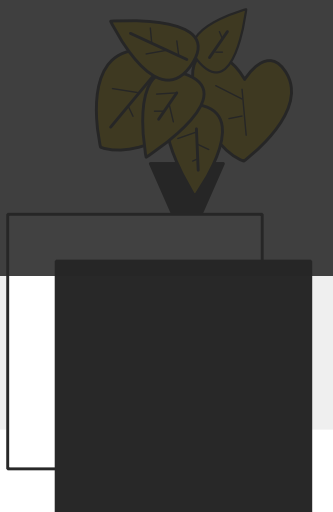
Limit access rights to:

- machines essential to its mission
- the days/months and time periods of intervention

Be alerted at the time of the interventions

View in real time the interventions

Tracing interventions (auditability)



CUSTOMER CASE : **internal connection**

An **internal administrator** with extended rights connects to a **critical server**

Re-visualize a user session after the event of an incident on the administered servers.



PROVEIT An intuitive, flexible and non-invasive bastion



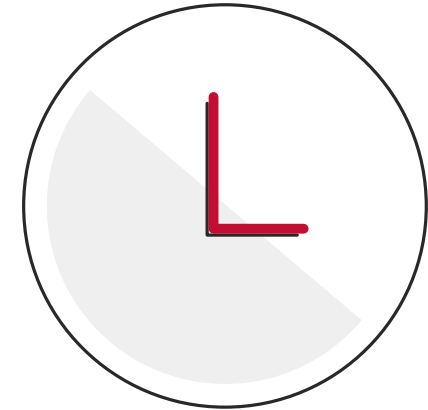
Easy to install

Easy integration on the IS - **without agent**
Virtualizable



Flexible to administer

Ease of administration - **intuitive**



Time saving Auditability

Integrated audit trails
A simple tool for visualization and restitution of sessions

Making your IS compliant

Solution certified by ANSSI French Information Systems Security Agency



ANSSI recommendations

- Secure IS administration guide (part 6.3)

https://www.ssi.gouv.fr/uploads/2015/02/guide_admin_securisee_si_ansi_pa_022_v2.pdf

Regulatory context

- Directives / sectors (Digital Hospital Plan, OSE – Essential Services Operators)
- RGPD (article 25§2- Privacy by default)

Checklist CNIL : https://www.cnil.fr/sites/default/files/atoms/files/check_list.pdf Sheets 2, 3, 4, 8, 12, 17.

- NIS Directive – Network and Information Security
- Certification of accounts





PROVEIT

by rubycat

Simplify the **Management** of
Privileged Acces (PAM)